



## US 434Y-M20

- Metal enclosure
- 4 Contacts
- 62 mm x 127 mm x 50 mm ( basic component)
- Switching points and contact function adjustable
- 3 cable entries M 20 x 1.5

## Data

### Ordering data

Product type description	US 434Y-M20
Article number (order number)	101176035
EAN (European Article Number)	4030661306339
eCl@ss number, version 12.0	27-27-06-01
eCl@ss number, version 11.0	27-27-06-01
eCl@ss number, version 9.0	27-27-06-01
ETIM number, version 7.0	EC000030
ETIM number, version 6.0	EC000030

### Approvals - Standards

Certificates	cULus EAC
--------------	--------------

## General data

Standards	EN IEC 60947-5-1
Working principle	mechanical
Slide form	Sphere
Enclosure material	Light alloy die-casting
Enclosure coating material	painted
Material of the contacts, electrical	Silver
Gross weight	435 g

## General data - Features

Number of normally closed (NC)	2
Number of normally open (NO)	2

## Safety classification - Safety outputs

B <sub>10D</sub> Normally-closed contact (NC)	2,000,000 Operations
---	----------------------

## Mechanical data

Actuating element	Plunger
Mechanical life, minimum	10,000,000 Operations
Actuating angle	20 °
Contact opening	2 x 1.5 mm
Actuating speed, minimum	1 mm/min
Actuating speed, maximum	1 m/s
Note (Actuating speed)	Actuating speed with vertical actuating angle to switch axis

## Mechanical data - Connection technique

Termination	Screw terminals M20 x 1.5
Cable section, minimum	1.5 mm <sup>2</sup>
Cable section, maximum	2.5 mm <sup>2</sup>
Note (Cable section)	All indications including the conductor ferrules.
Wire cross-section	13 AWG

## Mechanical data - Dimensions

Length of sensor	50 mm
Width of sensor	62 mm
Height of sensor	138 mm
Diameter of the Plunger	6 mm

## Ambient conditions

Degree of protection	IP65
Ambient temperature, minimum	-20 °C
Ambient temperature, maximum	+60 °C

## Ambient conditions - Insulation values

Rated insulation voltage $U_i$	500 V
--------------------------------	-------

## Electrical data

Thermal test current	16 A
Switching element	NC contact NO contact
Switching principle	Slow action

## Note

Note (General)

Type of contact and switching points can be factory set to order.  
Actuation from the side of the plunger should be avoided, since this reduces the mechanical life of the position switch.

## Ordering code

Product type description:

U(1) 434Y-(2)-(3)

(1)

---

<b>S</b>	Plunger S
<b>K</b>	Offset roller lever K
<b>8H</b>	Roller lever 8H
<b>H</b>	Roller lever H
<b>3H</b>	Roller lever 3H
<b>7H</b>	Roller lever 7H
<b>4H</b>	Spring rod lever on shaft 4H
<b>9H</b>	Rod lever 9H
<b>10H</b>	Rod lever 10H
<b>2H</b>	Leaf spring lever 2H
<b>6H</b>	Leaf spring lever 6H

(2)

---

<b>without</b>	2 NO contacts/2 NC contact
<b>40E</b>	4 NC contact
<b>4S</b>	4 NO contacts
<b>1S/30E</b>	1 NO contacts/3 NC contact
<b>3S/10E</b>	3 NO contacts/1 NC contact

(3)

---

<b>1272</b>	Version for low temperatures to -30 °C
-------------	--

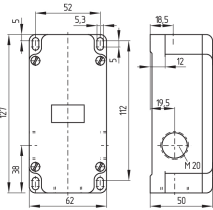
## Pictures

### Product picture (catalogue individual photo)



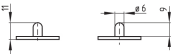
ID: ku43sf04  
| 790.7 kB | .jpg | 352.425 x 573.617 mm - 999 x 1626 px - 72 dpi  
| 63.6 kB | .png | 74.083 x 120.297 mm - 210 x 341 px - 72 dpi

### Dimensional drawing basic component



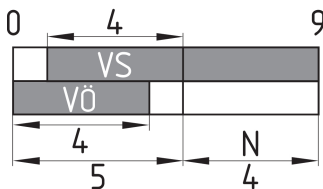
ID: 1u43-g04  
| 27.6 kB | .cdr |  
| 4.2 kB | .png | 74.083 x 52.211 mm - 210 x 148 px - 72 dpi  
| 91.2 kB | .jpg | 352.778 x 248.003 mm - 1000 x 703 px - 72 dpi

### Dimensional drawing actuator



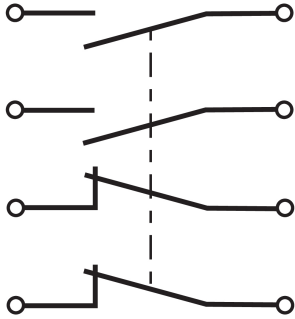
ID: 1u43sb01  
| 1.4 kB | .png | 74.083 x 51.858 mm - 210 x 147 px - 72 dpi  
| 22.5 kB | .jpg | 352.778 x 247.297 mm - 1000 x 701 px - 72 dpi

### Switch travel diagram



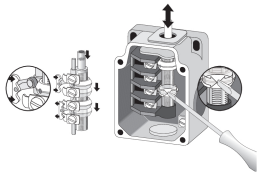
ID: ku43-s01  
| 54.7 kB | .ai | 297 x 210.002 mm - 841 x 595 px - 72 dpi  
| 1.3 kB | .png | 74.083 x 52.564 mm - 210 x 149 px - 72 dpi  
| 70.3 kB | .jpg | 352.778 x 224.014 mm - 1000 x 635 px - 72 dpi

## Diagram



ID: k2o2sk04  
| 19.1 kB | .cdr |  
| 81.1 kB | .jpg | 352.778 x 379.236 mm - 1000 x 1075 px - 72 dpi  
| 3.0 kB | .png | 73.731 x 79.375 mm - 209 x 225 px - 72 dpi

## Operating principle



ID: ku432a01  
| 203.1 kB | .cdr |  
| 157.4 kB | .jpg | 352.778 x 236.361 mm - 1000 x 670 px - 72 dpi  
| 19.8 kB | .png | 74.083 x 49.742 mm - 210 x 141 px - 72 dpi

## Operating principle



ID: 235sz01  
| 14.1 kB | .cdr |  
| 95.3 kB | .jpg | 352.778 x 1199.444 mm - 1000 x 3400 px - 72 dpi  
| 1.8 kB | .png | 74.083 x 251.883 mm - 210 x 714 px - 72 dpi



Schmersal, Inc., 15 Skyline Drive, Hawthorne, NY 10532

The details and data referred to have been carefully checked. Images may diverge from original. Further technical data can be found in the manual. Technical amendments and errors possible.

Generated on: 11/28/2022, 3:01 AM