



AZ 15 ZVRK-M16

- 3 cable entries M 16 x 1.5
- Thermoplastic enclosure
- Double-insulated
- Long life
- 52 mm x 75 mm x 30 mm
- Universal coding
- Large wiring compartment
- High level of contact reliability with low voltages and currents
- Slotted holes for adjustment, circular holes for location
- Insensitive to soiling

Data

Ordering data

Product type description	AZ 15 ZVRK-M16
Article number (order number)	101153619
EAN (European Article Number)	4030661169354
eCl@ss number, version 12.0	27-27-26-02
eCl@ss number, version 11.0	27-27-26-02
eCl@ss number, version 9.0	27-27-26-02
ETIM number, version 7.0	EC002592
ETIM number, version 6.0	EC002592

Approvals - Standards

Certificates	TÜV cULus CCC EAC
--------------	----------------------------

General data

Standards	EN ISO 13849-1 EN ISO 14119 EN IEC 60947-5-1
Coding level according to EN ISO 14119	Low
Working principle	electromechanical
Enclosure material	Plastic, glass-fibre reinforced thermoplastic, self-extinguishing
Material of the contacts, electrical	Silver
Gross weight	100 g

General data - Features

Increased latching force	Yes
Suitable for elevators	Yes
Number of cable glands	3
Number of safety contacts	1

Safety classification

Standards	EN ISO 13849-1
Mission time	20 Year(s)

Safety classification - Safety outputs

B _{10D} Normally-closed contact (NC)	2,000,000 Operations
---	----------------------

Mechanical data

Mechanical life, minimum	1,000,000 Operations
Latching force	30 N

Positive break travel	8 mm
Positive break force per NC contact, minimum	10 N
Actuating speed, maximum	2 m/s

Mechanical data - Connection technique

Termination	Screw terminals
Cable entry	3 x M16 x 1,5
Cable section, minimum	0.25 mm ²
Cable section, maximum	2.5 mm ²
Note (Cable section)	All indications including the conductor ferrules.

Mechanical data - Dimensions

Length of sensor	30 mm
Width of sensor	52 mm
Height of sensor	75 mm

Ambient conditions

Degree of protection	IP67
Ambient temperature, minimum	-30 °C
Ambient temperature, maximum	+80 °C
Storage and transport temperature, minimum	-40 °C
Storage and transport temperature, maximum	+85 °C
Permissible installation altitude above sea level, maximum	2,000 m

Ambient conditions - Insulation values

Rated insulation voltage U_i	500 V
Rated impulse withstand voltage U_{imp}	6 kV

Overvoltage category	III
Degree of pollution	3

Electrical data

Thermal test current	10 A
Required rated short-circuit current	1,000 A
Switching element	Opener (NC)
Switching principle	slow action, positive break NC contact
Switching frequency	4,000 /h

Electrical data - Safety contacts

Voltage, Utilisation category AC-15	230 VAC
Current, Utilisation category AC-15	4 A
Voltage, Utilisation category DC-13	24 VDC
Current, Utilisation category DC-13	4 A

Scope of delivery

Scope of delivery	Actuators must be ordered separately.
-------------------	---------------------------------------

Ordering code

Product type description:
AZ 15 ZV(1)K-(2)-(3)

(1)

without

Ejection force

R

Latching force 30 N

(2)

M16

cable entry M16

M20	Cable entry M20
ST	M12 connector, 4 pole
<hr/>	
(3)	
2254	Latching force 5 N
1762	Front mounting
1637	Gold-plated contacts

Pictures

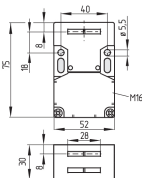
Product picture (catalogue individual photo)



ID: kaz15f01

| 409.7 kB | .jpg | 168.981 x 228.6 mm - 479 x 648 px - 72 dpi
 | 105.9 kB | .png | 74.083 x 100.189 mm - 210 x 284 px - 72 dpi

Dimensional drawing basic component



ID: 1az15g01

| 39.6 kB | .cdr |
 | 3.1 kB | .png | 74.083 x 51.506 mm - 210 x 146 px - 72 dpi
 | 61.6 kB | .jpg | 352.778 x 245.181 mm - 1000 x 695 px - 72 dpi

Switch travel diagram



ID: kaz15s01

| 19.1 kB | .cdr |
 | 1.5 kB | .png | 74.083 x 12.7 mm - 210 x 36 px - 72 dpi
 | 33.3 kB | .jpg | 352.778 x 60.325 mm - 1000 x 171 px - 72 dpi

Diagram



ID: k1o--k01

| 16.8 kB | .cdr |

| 20.8 kB | .jpg | 352.778 x 53.622 mm - 1000 x 152 px - 72 dpi

| 1.5 kB | .png | 74.083 x 11.289 mm - 210 x 32 px - 72 dpi

Schmersal, Inc., 15 Skyline Drive, Hawthorne, NY 10532

The details and data referred to have been carefully checked. Images may diverge from original. Further technical data can be found in the manual. Technical amendments and errors possible.

Generated on: 11/28/2022, 1:24 AM